

FROM APPLICATION TO INSIGHT

DECISION SUPPORT FOR DECEPTION DETECTION
AND INTEGRITY ASSESSMENT

Fraud and misrepresentation cost
insurers billions every year.

RISK DECISIONS SHOULD BE DEFENSIBLE.



WHAT MAKES SENSAL DIFFERENT



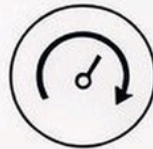
MULTI-SIGNAL PHYSIOLOGICAL ANALYSIS

Analyzes HR, HRV, blood flow
and additional indicators.



Works during real customer interactions

(video, call-based
workflows).



Real-time indicators to support decision-making



No sensors. No friction. No process disruption

WHY IT MATTERS



Fraud and misrepresentation
directly impact profitability.

SensAI introduces a scientific
signal layer into underwriting
and claims — helping identify
risk earlier and assess integrity

OPERATIONAL IMPACT

- ✓ Improve underwriting accuracy
- ✓ Detect potential misrepresentation early
- ✓ Reduce fraud-related losses
- ✓ Support more consistent decision-making

BUILT FOR INSURANCE OPERATIONS



PRE-
UNDERWRITING



CLAIMS
INVESTIGATION



SIU
SUPPORT



HIGH-RISK POLICY
SCREENING

NOT A LIE DETECTOR.

NOT BEHAVIORAL AI.

A DECISION SUPPORT LAYER
FOR INTEGRITY ASSESSMENT.



TRUSTED BY GOVERNMENT
AND ENTERPRISE ORGANIZATIONS



www.SensAI-tech.com