

FROM QUESTIONING TO INSIGHT

DECISION SUPPORT FOR DECEPTION DETECTION
AND INTEGRITY ASSESSMENT

Most investigations rely on intuition.
Very few are supported by objective signals.

WHEN EVERY ANSWER MATTERS.



WHAT MAKES SENSAL DIFFERENT



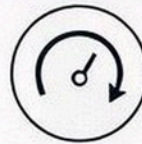
MULTI-SIGNAL PHYSIOLOGICAL ANALYSIS

Analyzes HR, HRV, blood flow
and additional indicators



Works in real interrogations

— not lab conditions.



Real-time indicators to guide follow-up questions



No sensors. No setup, No subject preparation

WHY IT MATTERS



Investigators rely on
experience and intuition.

SensAI adds a scientific layer –
helping identify when to go
deeper, when to challenge, and
where to focus.

OPERATIONAL IMPACT

- ✓ Identify topics of interest in real time
- ✓ Improve interrogation effectiveness
- ✓ Reduce time to actionable insight
- ✓ Support better case-building decisions

BUILT FOR LEA OPERATIONS



INTERROGATIONS



SUSPECT
QUESTIONING



WITNESS INTERVIEWS



INFORMANT
VALIDATION

NOT A LIE DETECTOR.

NOT BEHAVIORAL AI.

A DECISION-SUPPORT LAYER
FOR INVESTIGATIVE INTERVIEWS.



TRUSTED BY GOVERNMENT
AND ENTERPRISE ORGANIZATIONS



www.SensAI-tech.com