

FROM INTERVIEW TO INTELLIGENCE

DECISION SUPPORT FOR DECEPTION DETECTION AND INTEGRITY ASSESSMENT

TRUST SHOULD BE DEFENSIBLE.

SensAI is a decision-support platform that provides **objective physiological indicators** during interviews, interrogations, and intelligence questioning — in real time, contact-free, and without changing how professionals operate.



WHAT MAKES SENSAL DIFFERENT



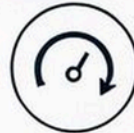
MULTI-SIGNAL PHYSIOLOGICAL ANALYSIS

Analyzes HR, HRV, blood flow and additional indicators for deeper insights.



ANY INTERVIEW FORMAT

Works with structured or unstructured conversations in any environment.



REAL-TIME INDICATORS

Live analytical indicators to guide questioning and focus on what matters.



CONTACT-FREE

No sensors, no setup, no disruption to the natural flow of the interview.

WHY IT MATTERS



Most interviews rely on intuition and experience.

SensAI introduces a scientific layer into high-stake decisions — supporting operators with objective signals when matters most.

OPERATIONAL IMPACT



FASTER & MORE FOCUSED INTERVIEWS

Identify topics of interest and reduce interview time.



IMPROVED DECISION CONFIDENCE

Objective indicators for more defensible outcomes.



FLEXIBLE DEPLOYMENT

Works in field, control room, or offline analysis of recorded video.



EASY TO USE

Minimal training. Maximum impact.

BUILT FOR HLS OPERATIONS



INTERROGATIONS



INTELLIGENCE INTERVIEWS



BORDER SCREENING



INFORMANT VALIDATION

NOT A LIE DETECTOR.

NOT BEHAVIORAL AI.

A DECISION-SUPPORT LAYER FOR INVESTIGATIVE INTERVIEWS.



TRUSTED BY GOVERNMENT AND ENTERPRISE ORGANIZATIONS



www.SensAI-tech.com